

MOTOARE ELECTRICE TRIFAZATE



**2 Poli / poles 2800 rpm****MOTORE / MOTOR**

	Motore Motor	Classe energetica Energy class	Grandezza Size	Potenza kW Power kW	Numero di poli Number of poles	Forma costruttiva Version
ES. DESIGNAZIONE EX. DESIGNATION	M	1	063	0.25	2P	B5
ES. CODICE EX. CODE	M	1	063	025	2	B5

Caratteristiche tecniche 2 Poli - 2800 rpm / Technical characteristics 2 Poles - 2800 rpm

Codice code			Tipo Type	Potenza Power	Tensione Voltage	Corrente Current	Classe energetica Energy class	Rendimento Efficiency	Fattore di potenza Power factor	Coppia nominale Rated torque	Coppia spunto / Cn Starting torque / Cn	Peso Weight
B5	B3	B14		kW	V	A (400V)		%	cos Φ	Cn (Nm)	Cs/Cn	B5 (kg)
M10560092B5	M10560092B3	M10560092B14	56A	0.09	230/400	0.44	IE1	45	0.65	0.32	2.2	2.8
M10560122B5	M10560122B3	M10560122B14	56B	0.12	230/400	0.56	IE1	45	0.69	0.43	2.2	3.2
M10630182B5	M10630182B3	M10630182B14	63A	0.18	230/400	0.66	IE1	53	0.72	0.63	2.2	4
M10630252B5	M10630252B3	M10630252B14	63B	0.25	230/400	0.80	IE1	58	0.78	0.88	2.2	4.4
M10630372B5	M10630372B3	M10630372B14	63C	0.37	230/400	1.07	IE1	64	0.78	1.30	2.2	4.9
M10710372B5	M10710372B3	M10710372B14	71A	0.37	230/400	1.06	IE1	64	0.79	1.29	2.2	5.6
M10710552B5	M10710552B3	M10710552B14	71B	0.55	230/400	1.46	IE1	69	0.79	1.90	2.2	6.3
M30800752B5	M30800752B3	M30800752B14	80A	0.75	230/400	1.64	IE3	80.7	0.82	2.52	2.3	10.4
M30801102B5	M30801102B3	M30801102B14	80B	1.1	230/400	2.32	IE3	82.7	0.84	3.69	2.2	13.3
M30901502B5	M30901502B3	M30901502B14	90S	1.5	230/400	3.07	IE3	84.2	0.84	5.03	2.2	12.5
M30902202B5	M30902202B3	M30902202B14	90L	2.2	230/400	4.37	IE3	85.9	0.85	7.35	2.2	15.4
M31003002B5	M31003002B3	M31003002B14	100L	3	230/400	5.74	IE3	87.1	0.87	9.91	2.2	28
M31124002B5	M31124002B3	M31124002B14	112M	4	400/690	7.48	IE3	88.1	0.88	13.22	2.2	34.4
M31325502B5	M31325502B3	M31325502B14	132SA	5.5	400/690	10.16	IE3	89.2	0.88	18.11	2.0	38
M31327502B5	M31327502B3	M31327502B14	132SB	7.5	400/690	13.71	IE3	90.1	0.88	24.61	2.0	65

4 Poli / poles

1400 rpm

MOTORE / MOTOR

	Motore Motor	Classe energetica Energy class	Grandezza Size	Potenza kW Power kW	Numero di poli Number of poles	Forma costruttiva Version
ES. DESIGNAZIONE EX. DESIGNATION	M	1	063	0.25	4P	B5
ES. CODICE EX. CODE	M	1	063	025	4	B5

Caratteristiche tecniche 4 Poli - 1400 rpm / Technical characteristics 4 Poles - 1400 rpm

Codice code			Tipo Type	Potenza Power	Tensione Voltage	Corrente Current	Classe energetica Energy class	Rendimento Efficiency	Fattore di potenza Power factor	Coppia nominale Rated torque	Coppia spunto / Cn Starting torque / Cn	Peso Weight
B5	B3	B14		kW	V	A (400V)		%	cos Φ	Cn (Nm)	Cs/Cn	B5 (kg)
M10560064B5	M10560064B3	M10560064B14	56A	0.06	230/400	0.30	IE1	48.5	0.59	0.43	2.3	3
M10560094B5	M10560094B3	M10560094B14	56B	0.09	230/400	0.43	IE1	50	0.61	0.65	2.3	3.3
M10630124B5	M10630124B3	M10630124B14	63A	0.12	230/400	0.55	IE1	50	0.64	0.85	2.2	3.9
M10630184B5	M10630184B3	M10630184B14	63B	0.18	230/400	0.70	IE1	57	0.65	1.27	2.2	4.3
M10630224B5	M10630224B3	M10630224B14	63C	0.25	230/400	0.89	IE1	61.5	0.66	1.77	2.2	5
M10710254B5	M10710254B3	M10710254B14	71A	0.25	230/400	0.82	IE1	61.5	0.72	1.77	2.2	5.4
M10710374B5	M10710374B3	M10710374B14	71B	0.37	230/400	1.09	IE1	66	0.74	2.58	2.2	6.5
M10710554B5	M10710554B3	M10710554B14	71C	0.55	230/400	1.51	IE1	70	0.75	3.81	2.2	7.2
M10800554B5	M10800554B3	M10800554B14	80A	0.55	230/400	1.51	IE1	70	0.75	3.83	2.2	8.2
M30800754B5	M30800754B3	M30800754B14	80B	0.75	230/400	1.76	IE3	82.5	0.75	5.08	2.3	12.8
M30901104B5	M30901104B3	M30901104B14	90S	1.1	230/400	2.49	IE3	84.1	0.76	7.40	2.3	16.2
M30901504B5	M30901504B3	M30901504B14	90LA	1.5	230/400	3.31	IE3	85.3	0.77	10.09	2.3	19.2
M31002204B5	M31002204B3	M31002204B14	100LA	2.2	230/400	4.54	IE3	86.7	0.81	14.69	2.3	25
M31003004B5	M31003004B3	M31003004B14	100LB	3	230/400	6.05	IE3	87.7	0.82	19.90	2.3	29.5
M31124004B5	M31124004B3	M31124004B14	112M	4	400/690	7.98	IE3	88.6	0.82	26.53	2.2	37.8
M31325504B5	M31325504B3	M31325504B14	132S	5.5	400/690	10.72	IE3	89.6	0.83	36.22	2.0	58.7
M31327504B5	M31327504B3	M31327504B14	132M	7.5	400/690	14.31	IE3	90.4	0.84	49.40	2.0	68
M316011X4B5	M316011X4B3	M316011X4B14	160M	11	400/690	20.52	IE3	91.4	0.85	72.45	2.2	97
M316015X4B5	M316015X4B3	M316015X4B14	160L	15	400/690	27.45	IE3	92.1	0.86	98.79	2.2	112

6 Poli / poles 900 rpm

MOTORE / MOTOR

	Motore Motor	Classe energetica Energy class	Grandezza Size	Potenza kW Power kW	Numero di poli Number of poles	Forma costruttiva Version
DESIGNAZIONE DESIGNATION	M	1	080	0.37	6P	B5
CODICE CODE	M	1	080	037	6	B5

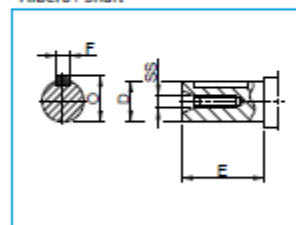
Caratteristiche tecniche 6 Poli - 900 rpm / Technical characteristics 6 Poles - 900 rpm

Codice code			Tipo Type	Potenza Power	Tensione Voltage	Corrente Current	Classe energetica Energy class	Rendimento Efficiency	Fattore di potenza Power factor	Coppia nominale Rated torque	Coppia spunto / Cn Starting torque / Cn	Peso Weight
B5	B3	B14		kW	V	A (400V)		%	cos φ	Cn (Nm)	Cs/Cn	B5 (kg)
M10630126B5	M10630126B3	M10630126B14	63B	0.12	230/400	0.73	IE1	38.3	0.62	1.35	2	5.3
M10710186B5	M10710186B3	M10710186B14	71A	0.18	230/400	0.87	IE1	45.5	0.66	1.95	1.6	6
M10710256B5	M10710256B3	M10710256B14	71B	0.25	230/400	0.99	IE1	52.1	0.7	2.65	2.1	6.5
M10710376B5	M10710376B3	M10710376B14	71C	0.37	230/400	1.30	IE1	59.7	0.69	3.97	2	7.2
M10800376B5	M10800376B3	M10800376B14	80A	0.37	230/400	1.28	IE1	59.7	0.7	3.93	1.9	8.2
M10800556B5	M10800556B3	M10800556B14	80B	0.55	230/400	1.68	IE1	65.8	0.72	5.84	2	9.9
M30900756B5	M30900756B3	M30900756B14	90S	0.75	230/400	1.94	IE3	78.9	0.71	7.62	2.0	18.2
M30901106B5	M30901106B3	M30901106B14	90L	1.1	230/400	2.70	IE3	81	0.73	11.06	2.0	24.3
M31001506B5	M31001506B3	M31001506B14	100L	1.5	230/400	3.61	IE3	82.5	0.73	15.08	2.0	25.7
M31122206B5	M31122206B3	M31122206B14	112M	2.2	230/400	5.11	IE3	84.3	0.74	21.89	2.0	32
M31323006B5	M31323006B3	M31323006B14	132S	3	230/400	6.86	IE3	85.6	0.74	39.54	2.0	34
M31324006B5	M31324006B3	M31324006B14	132MA	4	400/690	9.03	IE3	86.8	0.74	39.38	2.0	45
M31325506B5	M31325506B3	M31325506B14	132MB	5.5	400/690	12.08	IE3	88	0.75	54.15	2.0	63

Dimensioni d'ingombro / Dimensions

Tipo/ Type	B3 / B5 / B14				
	D	E	F	O	SS
56	Ø9	20	3	10.2	M3
63	Ø11	23	4	12.5	M4
71	Ø14	30	5	16	M5
80	Ø19	40	6	21.5	M6
90S	Ø24	50	8	27	M8
90L	Ø24	50	8	27	M8
100	Ø28	60	8	31	M10
112	Ø28	60	8	31	M10
132S	Ø38	80	10	41	M12
132M/L	Ø38	80	10	41	M12
160M/L	Ø42	110	12	45	M16

Albero / Shaft



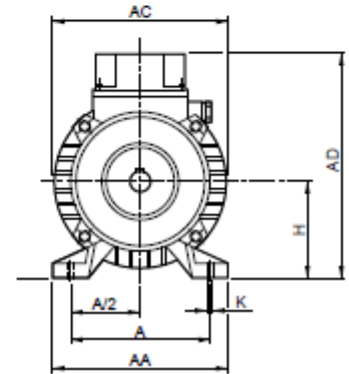
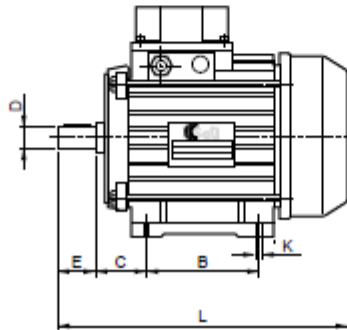
Dimensioni d'ingombro motori IE1 / Dimensions motors IE1

Tipo/ Type	B3						B5					B14					B3 / B5 / B14			
	H	A	AA	AD	B	C	K	M	N	P	T	S	N	M	P	T	S	HD	AC	L
56	56	90	110	156/151	71	36	5.8X8.8	Ø100	Ø80	Ø120	3	Ø7	Ø50	Ø65	Ø80	2.5	M5	100/96	Ø112	195
63	63	100	120	173/169	80	40	7X10	Ø115	Ø95	Ø140	3	Ø10	Ø60	Ø75	Ø90	2.5	M5	110/106	Ø121	230
71	71	112	132	188/184	90	45	7X10	Ø130	Ø110	Ø160	3.5	Ø10	Ø70	Ø85	Ø105	2.5	M6	117/113	Ø140	260
80	80	125	160	217/212	100	50	10X13	Ø165	Ø130	Ø200	3.5	Ø12	Ø80	Ø100	Ø120	3	M6	137/132	Ø156	295
90S	90	140	175	235/230	100	56	10X13	Ø165	Ø130	Ø200	3.5	Ø12	Ø95	Ø115	Ø140	3	M8	145/140	Ø175	315
90L	90	140	175	235/230	125	56	10X13	Ø165	Ø130	Ø200	3.5	Ø12	Ø95	Ø115	Ø140	3	M8	145/140	Ø175	335/365
100	100	160	198	253/248	140	63	12X15	Ø215	Ø180	Ø250	4	Ø15	Ø110	Ø130	Ø160	3.5	M8	152/157	Ø200	400
112	112	190	220	282/274	140	70	12X15	Ø215	Ø180	Ø250	4	Ø15	Ø110	Ø130	Ø160	3.5	M8	180/172	Ø220	400/440
132S	132	216	252	325/317	140	89	12X15	Ø265	Ø230	Ø300	4	Ø15	Ø130	Ø165	Ø200	4	M10	193/185	Ø260	440
132M/L	132	216	252	325/317	178	89	12X15	Ø265	Ø230	Ø300	4	Ø15	Ø130	Ø165	Ø200	4	M10	193/185	Ø260	480/500
160M/L	160	254	290	390	210/254	108	15X19	Ø300	Ø250	Ø350	5	Ø19	Ø180	Ø215	Ø250	4	M12	230	Ø320	640

Nota:
Dimensioni dei motori IE3 contattare servizio tecnico SATI

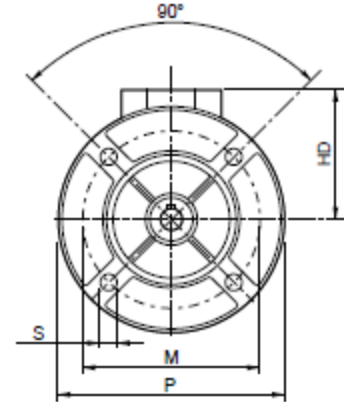
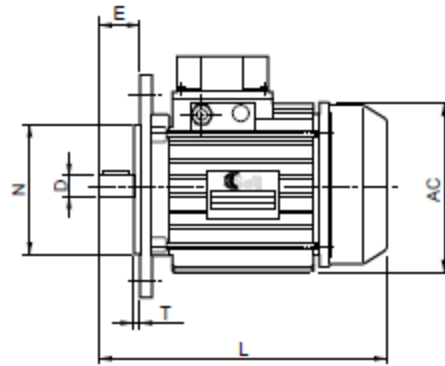
Note:
Dimensions of motors IE3, contact the technical department SATI.

B3

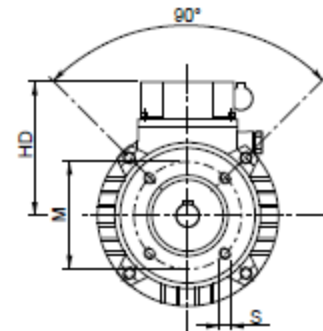
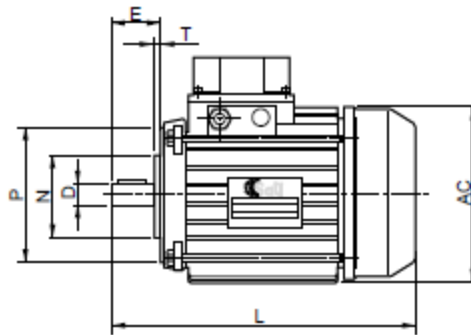


ev

B5



B14



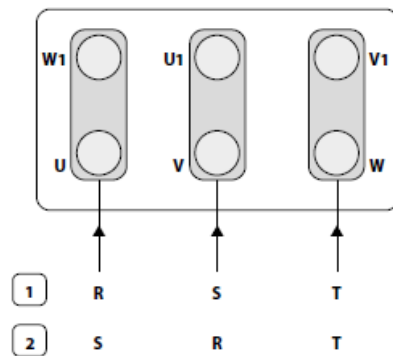
Schemi di collegamenti / Diagram of connections

(Prodotto escluso dal campo di applicazione del Sistema Qualità ISO 9001)
 (This product is excluded from the scope of ISO 9001 Quality Management System)

Motori asincroni trifase / Three-phase asynchronous motors

230 Volt

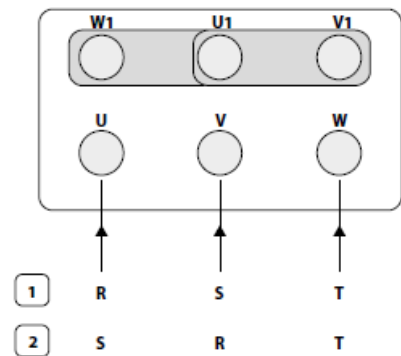
Collegamento triangolo / Triangle connection



1 Rotazione oraria/Clockwise rotation

400 Volt

Collegamento stella / Star connection



2 Rotazione antioraria/Anti-clockwise rotation

Posizioni di piazzamento / Mounting positions

(Prodotto escluso dal campo di applicazione del Sistema Qualità ISO 9001)
 (This product is excluded from the scope of ISO 9001 Quality Management System)

